

Tools

Drive Sockets • Wrenches • Axle Stands
• Torches • Sealants • Electric Hand Tools



Torch Page 31

Compressor Page 31

Socket Tester Page 31

Sealers Page 33

Battery Charger Page 34

Jacks Page 31

Sockets Page 30

Contents	Page
Tools: Expert quality 3/4" drive sockets, ratchet, flexible handles & torque wrench	30
Tools: Assorted hand tools essential to any trailer maintenance workshop	31
Tools: More essential maintenance & workshop tools	32
Tools: More useful small hand tools as well as that essential first aid kit	33
Electrical tools, strip and crimp & terminal sets as well as heavy duty battery chargers	34

1 3/4" DRIVE SOCKETS AND ACCESSORIES

B0086	3/4 drive socket. 19mm (wheel bolts and M12 bolts)
B0087	3/4 drive socket. 22mm (M14 bolts)
B0088	3/4 drive socket. 24mm (M16 bolts)
B0089	3/4 drive socket. 26mm
B0090	3/4 drive socket. 27mm
B0091	3/4 drive socket. 28mm
B0092	3/4 drive socket. 30mm
B0093	3/4 drive socket. 32mm
B0094	3/4 drive socket. 33mm
B0095	3/4 drive socket. 36mm (P6e axle end nut)
B0096	3/4 drive socket. 38mm
B0097	3/4 drive socket. 41mm
B0098	3/4 drive socket. 42mm
B0003	3/4 drive socket. 46mm (axle end nuts on braked trailers)
B0099	3/4 drive socket. 50mm
B0100	3/4 drive socket. 55mm

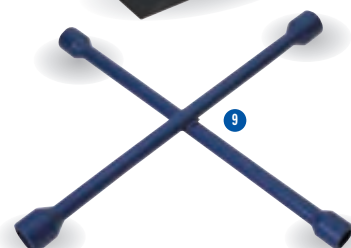
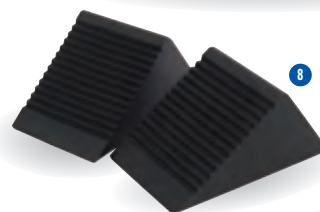
HEAVY DUTY TORQUE WRENCH

- 2 B0120 3/4" socket set.** 3/4" square drive socket set manufactured largely from carbon steel hardened, tempered and chrome plated for corrosion protection. Packed in blow mould carrying case and display sleeve.
- Contents:
- Metric size: 22, 24, 26, 27, 30, 32, 33, 36, 38, 41 and 46mm
 - Imperial size: 15/16, 1.1/8, 1.3/16, 1.1/4, 1.5/16, 1.3/8, 1.7/16, 1.1/2, 1.5/8 and 1.3/4" AF
 - reversible ratchet (chrome vanadium steel)
 - 3 extension bars size: 100, 150 and 200mm
 - sliding tee bar
- 3 B0121 3/4" drive ratchet.** 3/4" square drive, manufactured from chrome vanadium steel hardened, tempered, chrome plated and polished for corrosion protection. Fine 43 tooth ratchet, 500mm long with forward /reverse selector. Handle with knurled grip. Spring-loaded ball bearing for secure socket holding.
- B0122 Ratchet repair kit.** For B0121 3/4" drive ratchet.
- 4 B0123 3/4" drive flexible handle.** Expert Quality, manufactured from chrome molybdenum steel hardened, tempered, chrome plated and polished for corrosion protection. Hinged joint head and positive stops at 0° and 90°. Spring-loaded ball bearing for secure socket holding.
- B0124 Spare part set.** For 3/4" flexible handle above.
- 5 B0101 3/4 drive extension.** Extension bar - 100mm long.
- 6 B0002 Torque wrench.** 3/4" square drive 70-395Nm supplied in protective case.





- 1 B0001 **Socket tester.** Tests for correct function from the towing vehicle's 12N socket, complete with 5m cable and plug.
- 2 B0002 **Torque wrench.** 3/4" square drive 70-395Nm Supplied in protective case.
- 3 B0003 **46mm Socket.** 3/4" square drive to suit axle end nuts on braked trailers.
- 4 B0004 **Combination spanner set.** Contains 6, 7, 8, 9, 10, 11, 12, 13, 14, 17 and 19mm High torque combination spanners in divided vinyl wallet.
- 5 B0005 **Adjustable wrench.** Expert quality chrome vanadium steel, hardened and tempered with black phosphate finish, Length 150mm capacity 24mm.
- B0006 **Adjustable wrench.** Length 200mm capacity 29mm.
- B0007 **Adjustable wrench.** Length 250mm capacity 33mm.
- B0008 **Adjustable wrench.** Length 300mm capacity 38mm.
- B0009 **Adjustable wrench.** Length 375mm capacity 45mm.
- B0010 **Adjustable wrench.** Length 450mm capacity 57mm.
- 6 B0011 **Hex key set.** 1.5, 2, 2.5, 3, 4, 5 and 6mm sizes assembled into holder.
- 7 B0012 **Hex key set (ball end).** 2, 2.5, 3, 4, 5, 5.5, 6, 7, 8 and 10mm sizes each has conventional short arm and ball end on long arm, supplied with holder.
- 8 B0013 **Wheel chocks.** Pair of black plastic wheel chocks.
- 9 B0019 **Wheel nut wrench.** 4 headed wrench sizes 17, 19, 21 and 22mm.
- 10 B0020 **Compressor.** 250psi (max) 12v DC powered, supplied with car lighter plug on 3m cable, car tyre valve and three valve adaptors.
- 11 B0021 **Tyre pressure gauge.** 0-100 psi dial type gauge with air release button, supplied with flexi hose and swivel valve connection.
- 12 B0014 **Scissor jack.** Lift range 95 - 300mm maximum load 1500Kg, with loose cranking handle.
- 13 B0015 **Axle stands.** Ratchet action clamp max safe load 4000Kg, supplied as a pair.
- 14 B0016 **Torch.** Water and impact resistant aluminium bodied torch, spare bulb included (requires 3 D cells).
- 15 B0017 **Headlamp.** Allows hands free work in dark areas and puts the light just where it's needed (requires 4 AA cells).
- 16 B0018 **Lantern torch.** Heavy duty lantern style torch with fitted 6v battery.



- 1 B0138 25 piece 1/2" square drive combined value socket set.**
Draper Value, 1/2" square drive, manufactured from carbon steel, hardened, tempered and chrome plated for corrosion protection. Contents: 13 x 12 point sockets size: 10, 11, 12, 13, 14, 15, 16, 17, 18, 19, 20, 21 and 22mm 6 x 12 point sockets size: 7/16, 1/2, 9/16, 5/8, 11/16 and 3/4" AF 2 spark plug sockets size: 10 and 14mm reversible ratchet 2 extension bars size: 75mm & 250mm sliding tee bar. Packed in blow mould carrying case.
- 2 B0135 13 piece HSS metric twist drill set.**
1.5mm - 6.5mm Manufactured to DIN 338 and ISO 235/1 Specifications. Expert Quality, high speed steel straight shank twist drills. Display packed in plastic storage case. Contents: 1.5, 2.0, 2.5, 3.0, 3.2, 3.5, 4.0, 4.2, 4.5, 5.0, 5.5, 6.0 and 6.5mm.
- 3 B0136 19 piece HSS metric twist drill set.**
1.0mm - 10mm Manufactured to DIN 338 and ISO 235/1 Specifications. Expert Quality, high speed steel straight shank twist drills. Supplied in heavy gauge steel case with self-lifting magazine drill holder, each compartment having its own size identification. Carton packed. Contents: 1.0, 1.5, 2.0, 2.5, 3.0, 3.5, 4.0, 4.5, 5.0, 5.5, 6.0, 6.5, 7.0, 7.5, 8.0, 8.5, 9.0, 9.5 and 10.0mm.
- 4 B0137 Hand held countersink bit.**
13mm Chemically blacked finish with plastic handle, for use on wood and plastics. Display packed.
- 5 B0128 5 piece parallel pin punch set.**
Long pattern 200mm overall length with extra long 90mm parallel drive. Comprising 1/8, 3/16, 1/4, 5/16 and 3/8" diameter punches. Display packed in storage wallet.
- 6 B0130 Hand vice.**
36mm hand held vice for the secure clamping of component parts prior to grinding, drilling, etc.
- 7 B0127 3 piece nut splitter set.**
9 - 22mm Capacity. For the safe removal of corroded or damaged nuts without damaging bolt threads. Drop forged steel body hardened and tempered with plated finish. Threaded splitting pin manufactured from chrome molybdenum steel hardened and tempered with chemically blacked finish. Capacities: 9 - 12mm, 12 - 16mm and 16 - 22mm. Display packed.
- 8 B0129 7 piece chisel and punch set.**
Chrome vanadium steel hardened and tempered with a chemically blacked finish and plastic grips. Supplied in storage roll. Display packed. Contents: 3 cold chisels: 10, 13 and 16 x 150mm 2 taper punches: 3 and 4 x 150mm centre punch: 10 x 150mm parallel pin punch: 4 x 150mm.
- 9 B0131 200mm farmers own / tool file.**
Single cut files to give fine/sharp finish to garden tools. Carbon chrome steel hardened and tempered with rust preventative finish and dipped in rust preventative oil. Self handled with hang hole.
- 10 B0132 250mm farmers own / tool file.**
Single cut files to give fine/sharp finish to garden tools. Carbon chrome steel hardened and tempered with rust preventative finish and dipped in rust preventative oil. Self handled with hang hole.
- 11 B0133 Battery powered diamond tipped engraver.**
Battery-powered diamond tipped engraver suitable for engraving and security marking on most surfaces including glass, ceramics and metals. Belt-clip and 1.75M (approx.) power lead. Runs off 4 x AA type batteries (not supplied).
- B0134 Spare tip.**
Spare diamond tip for engraver.
- 12 B0125 Force feed oil can.**
200ml oil can supplied with fitted flexible spout and a loose interchangeable rigid spout.
- 13 B0126 Side lever grease gun.**
500cc Lever action gun for use with standard grease gun cartridges and bulk. Supplied complete with delivery tube, connector with 1/8" BSPT thread and pressure relief valve.





- 1 B0022 **Screwdriver set.** Engineers pattern with rooted cap, slotted 5x75 6x100 8x150 & 8x200 Cross head No. 1 2 & 3.
- 2 B0024 **Fencing pliers.** Incorporate a striking face, staple remover, crimping jaw, wire grips for twisting, two shear cutters and comfort grips.
- 3 B0023 **Plier set.** Set of three most commonly used, Flat radio pliers, Combination round nose and side cutter types.
- 4 B0038 **Vice grip.** Locking vice grip plier 7".
- 5 B0039 **Vice grip.** Locking vice grip plier 10".
- 6 B0119 **Safety Kit.** Gloves, safety goggles, pair of dust masks, ear defenders and hooded overall. (Contents may vary from illustration)
- 7 B0036 **First aid kit.** Multi purpose kit in zipper bag, also includes guidance leaflet and car sticker.
- 8 B0037 **Sealer gun.** Suitable for all the adhesive and sealant cartridges listed on this page.
- 9 B0150 **Sealer geobond CV white.** MS polymer based sealant adhesive specifically developed for commercial vehicle bodybuilders non-hazardous and environmentally friendly.
- 10 B0151 **Sealer geobond CV grey.** As above in a steel grey colour.
- 11 B0153 **Sealer hansil GP clear.** Silicone elastomer sealant colourless.
- 12 B0154 **Sealer hansil GP brown.** Silicone elastomer sealant in dark brown colour.



For the Horse & Rider first aid kit, please see page 23



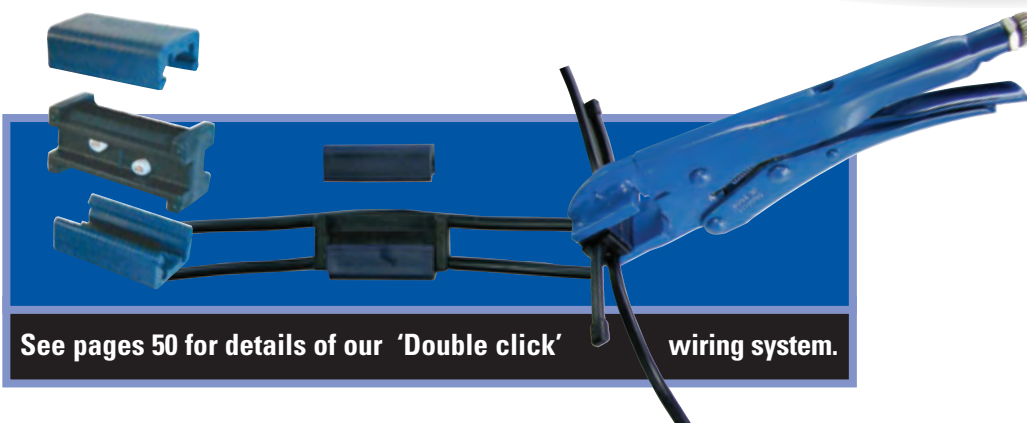
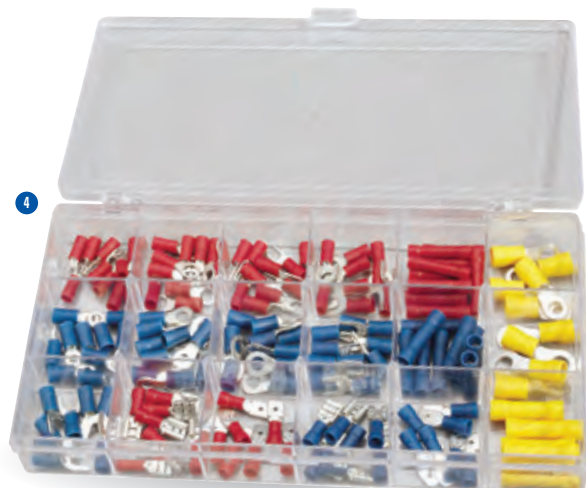
BATTERY CHARGER

- 1 **B0114 BC15 Battery charger.** 12/24v for garage and workshop use, thermal overload protection, easy to read ammeter, polarity inversion and an effective charging current of 15.5A @ 12v. Suits 12v batteries up to 200Ah

B0114F Fuse 15A. Spare fuse for BC15 battery charger.

ELECTRIC HAND TOOLS

- 2 **B0116 5 way crimp tool set.** Heavy gauge carbon steel crimping tool, display packed with a selection of popular sized terminals that are likely to be found in junction box, plug or lighting applications.
- 3 **B0117 6 way strip & crimp tool set.** 6 way crimping tool and automatic wire stripper (with adjustable tension control) display packed with approx. 50 plain and 50 insulated terminals.
- 4 **B0118 Terminal pack.** Approx 150 insulated terminals, spade, ring and wire joiners in an 18 division plastic box.



See pages 50 for details of our 'Double click' wiring system.